



Monck Street, Westminster
London SW1P

GARTON JONES.COM

Monck Street, Westminster London, SW1P

GARTON JONES.COM

49 Marsham Street Sales +44 (0) 20 7340 0480
London westminster@gartonjones.com
SW1P 3DP www.gartonjones.com

£550,000 Leasehold

Spacious and well presented one bedroom apartment located on the 1st floor (with lift) in this modern secure development. The property is sold with vacant possession and comprises of a separate eat in kitchen, reception room with access to a private balcony, very good size double bedroom and modern bathroom. Further benefits include ample storage cupboard, secure underground parking (on first come first serve basis) and a 24 hour concierge. Ridley House is located on Monck Street and is extremely convenient for access to many of the renowned local landmarks which include the Houses of Parliament, Westminster Abbey, Tate Britain Gallery and the River Thames. The local transport links of Victoria Station is nearby providing mainline UK services including the Gatwick Express as well as the underground services of Victoria, Pimlico, St James Park and Westminster. The area has an abundance of amenities such as Sainsbury's, Waitrose, Marks & Spencer's, House of Fraser and a Curzon Cinema plus following on from the extensive regeneration of Victoria street a selection of many new restaurants to compliment existing ones. The property would make an excellent rental investment and we would estimate a gross rental yield of 4.06%. Garton Jones Westminster are located in the next road so are readily available for viewings.

Service Charge and Ground Rent: £4980 Per Annum
Long Leasehold Expires 2106

- One Bedroom Apartment
- 1st Floor (Lift)
- Separate Kitchen
- Reception Room
- Private Balcony
- Bathroom
- Sold With Vacant Possession
- 24 Hour Concierge & Secure Underground Parking (First Come First Serve Basis)
- Moments from the Tube Links of St James Park and Westminster
- Local Amenities Including Shops and Restaurants all Within Easy Reach

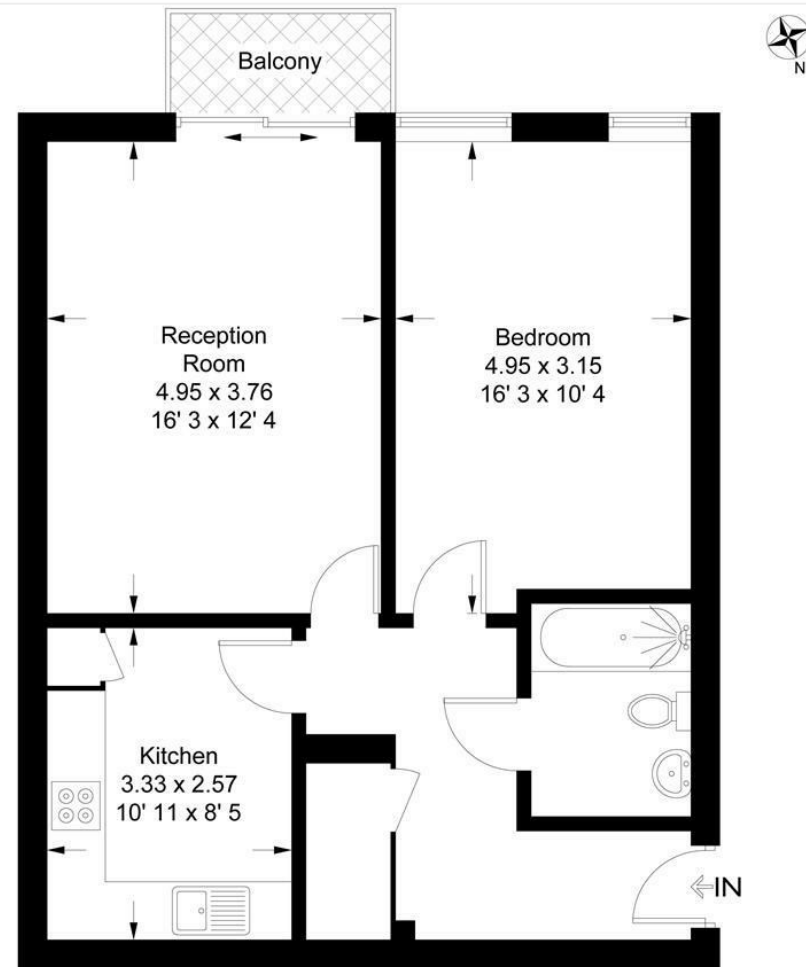


EPC certificate available on request.

Ridley House

Approximate Gross Internal Area = 614 sq ft / 57.1 sq m

GARTON JONES
LONDON



First Floor

This plan is not to scale and must be used as layout guidance only. All measurements and areas are approximate and should not be relied upon to provide accurate information. This plan must not be relied upon when making property valuations, design considerations or any other such relevant decisions. We accept no responsibility or liability (whether in contract, tort or otherwise) in relation to any loss whatsoever arising from or in connection with any use of this plan or the adequacy, accuracy or completeness of it or any information within it.



